

# RANGE HOOD COVERS & FLOATING SHELVES

2024 CATALOG



# STYLE OPTIONS:



MANTLE



BOXED



TAPERED



CURVED



SLOPED



ANGLED

All hood covers are built with premium cabinet-grade materials. The canopies, back mounting board, and solid bottom inserts will be made from 3/4" maple veneer plywood or combi-core. Mantles and trims will be crafted from solid hardwood maple.

# EXTENDED HOOD OPTIONS:



Deco Trim



Mantle Style Hoods



Square Trim



No Trim Option



Shiplap Option



Two-Tone Finish



Wood Strapping



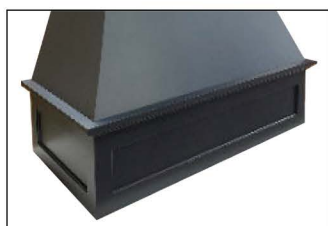
Metal Strapping



Hardwood Band



Hardwood Mantles



Deco Ledge Mantles



Paneled Mantles



Built-In Option

All hoods come standard with solid bottom & square trim included.  
Options may change the overall size of the hood cover.  
Custom sized available upon request.

**Styles:** Curved - Boxed - Tapered - Mantle Style Hood

**Choose a Profile:** Sloped or Angled

# DECO TRIM

---



CURVED W/ STRAPPING & DECO TRIM



CURVED W/ STRAPPING & DECO TRIM PANELED MANTLE



SLOPED W/ DECO TRIM

## Deco Trim

Available on all hood types.

Alternative decorative option to square trim.

Same as square trim, Deco trim adds 1 ½" to overall width and ¾" to overall depth of hoods.

Deco trim will be installed on top and bottom edge of mantles.

# MANTLE STYLE HOODS



MANTLE STYLE WITH SHAKER PANEL AND SQUARE TRIM



MANTLE STYLE WITH SHAKER PANEL AND SQUARE TRIM



## Mantle Style Hoods

Built-In Style hood with Removable Paneled Canopy and extended mantel.

Built-In box is 15" deep & mantel will be 5 1/2" deep plus trim.

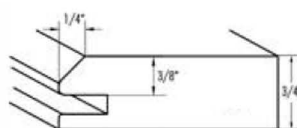
Paneled options are Shaker and 1/4 Bead. Hoods 42" and less will have two equal paneled and >42" will have 3 equal panels.

Square, deco, and no trim options available.

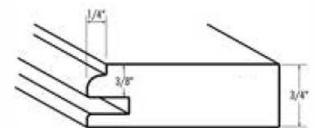
All hoods will have removable canopy with furniture clips.

\*Width of hood will be the actual Built-In box width. Trims will return to the face of the built-in box

It is recommended that the blower insert width to be 6" less than width of hood for built-in options



SHAKER INSIDE EDGE PROFILE



1/4 BEAD INSIDE EDGE PROFILE

# MANTLE STYLE HOODS



MANTLE STYLE WITH SHAKER PANEL AND  
DECO TRIM

## Mantle Style Hoods

Built-In Style hood with Removable Paneled Canopy and extended mantle.

Built-In box is 15" deep and mantle will be 5 1/2" deep plus trim.

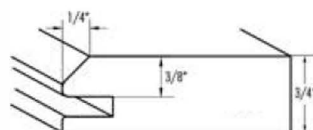
Paneled options are Shaker and 1/4 Bead. Hoods 42" and less will have two equal paneled and >42" will have 3 equal panels.

Square, deco, and no trim options available.

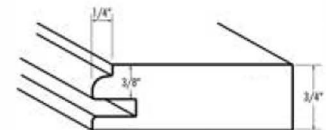
All hoods will have removable canopy with furniture clips.

\*Width of hood will be the actual Built-In box width. Trims will return to the face of the built-in box.

It is recommended that the blower insert width to be 6" less than width of hood for built-in options



SHAKER INSIDE EDGE PROFILE



1/4 BEAD INSIDE EDGE PROFILE

# SQUARE TRIM

---



CURVED W/ SQUARE TRIM



CURVED W/ SQUARE TRIM

## Square Trim

Available on all hood types – This is standard trim.

Square trim adds 1 1/2" to overall width and 3/4" to overall depth of hoods.

Square trim will be installed on top & bottom edge of mantles.

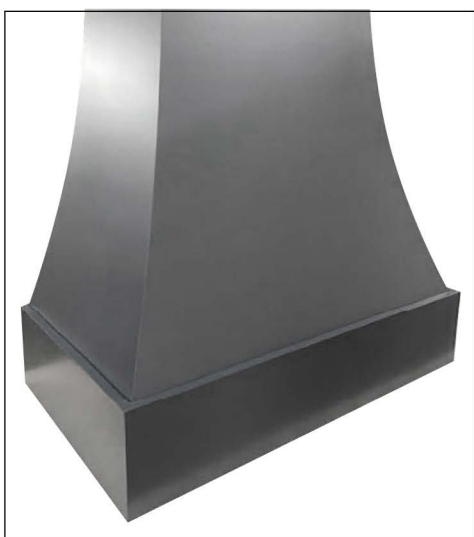


SLOPED W/ SQUARE TRIM

# NO TRIM OPTION

---

---



CURVED W/ NO TRIM OPTION

## No Trim Option

Available on all hood types.

Alternative to square trim or deco trim.

Same as square and deco, No trim options adds 1 1/2" to overall width and 3/4" to overall depth of hoods.



No trim option will be finished the same as the hood.



# SHIPLAP OPTION

---



TAPERED WITH SHIPLAP



BOXED WITH SHIPLAP

## Shiplap Option

Available on Boxed, Angled, and Tapered hood only.

Shiplap spacing height will typically be 5 ½" – 7" but will be proportionate to the height of each hood to create equal spacing.



TAPERED WITH SHIPLAP

# TWO-TONE FINISH

---



BOXED WITH TWO-TONE PAINTED FINISH



BOXED WITH TWO-TONE PAINTED FINISH

## Two-Tone Finish Option

Available on Curved, Sloped, Boxed, Angled, and Tapered hoods only.

Canopy will be finished one standard color and the mantle, trim, & solid bottom will be finished a different standard color.

# WOOD STRAPPING



CURVED W/ STRAPPING



CURVED W/ STRAPPING & CONNECTOR



CURVED W/ STRAPPING

## Wood Strapping

Available on all hood types.

Alternative to square trim or deco trim.

Same as square and deco, No trim options adds 1 1/2" to overall width and 3/4" to overall depth of hoods.

No trim option will be finished the same as the hood.

# METAL STRAPPING



CURVED W/ SATIN BRASS STRAPPING



CURVED W/ SATIN BRASS STRAPPING  
WHITE OAK HARDWOOD MANTLE

## Metal Strapping

Available on all hood types with Square Trim or No Trim only.

Metal Strapping is 3/4" and will be installed on edges of square trim and 2 on canopy equally spaced only.

### **Available finishes:**

Satin Brass, Polished Brass, Satin Stainless, Flat Black, & Titanium (gun metal)



\*\*\*Note: Metal strapping is attached using a high quality double-sided adhesive and corners on trim are mitered to very tight tolerances. However, due to the expansion and contraction of the nature of wood vs. metal, there is a potential for very small joint gaps on the corners of the mitered metal joints.

# HARDWOOD BAND

---



ANGLED W/ WHITE OAK HARDWOOD BAND



ANGLED W/ WHITE OAK HARDWOOD BAND

## Hardwood Band

---

Available on all hood types.

Available hardwood species options (Maple, Cherry, White Oak, Walnut).

Hardwood Bands will be finished with a natural clear coat unless requested as unfinished.

All wood grain will run horizontally with mitered corners.

Hardwood band will be attached to outside of mantle to take the place of trim.

\*Solid bottoms will be finished the same as the canopy of the hood.

As does square trim, hardwood bands will add 1 1/2" to overall width of hood and 3/4" to the depth.



WALNUT



MAPLE



WHITE OAK



CHERRY

\*Images are representations of typical wood grain and color of species. Actual hardwood will vary from piece to piece.

# HARDWOOD MANTLES

---

---



CURVED W/ STRAPPING MAPLE MANTLE W/ SQUARE TRIM



CURVED  
WHITE OAK MANTLE W/ SQUARE TRIM

## Hardwood Mantles

---

---

Available on all hood types.

Available hardwood species options (Maple, Cherry, White Oak, Walnut).

All wood grain will run horizontally with mitered corners.

Hardwood Bands will be finished with a natural clear coat unless requested as unfinished.

All wood grain will run horizontally with mitered corners.

Hardwood Mantles will include matching square trim and solid bottom.

# DECO LEDGE MANTLE



CURVED WITH DECO LEDGE AND  
PANELED ¼ BEAD MANTLE



CURVED WITH DECO LEDGE AND PANELED  
¼ BEAD MANTLE



## Deco Ledge Mantle

Available on all hood types.

Top edge of mantle will have a stacked deco & square trim ledge and NO trim on the bottom edge of mantle.

Mantle height will be standard 8 ¼”.

\*Deco Ledge option adds 3” to overall width and 1 ½” to overall depth.

Solid mantle and paneled mantle available.

# PANELED MANTLES



SLOPED WITH DECO TRIM AND  
PANELED MANTLE SHAKER PROFILE



CURVED W/ STRAPPING & DECO TRIM  
PANELED MANTLE 1/4 BEAD PROFILE  
SIDE PANELED OPTION



SLOPED WITH DECO TRIM AND PANELED  
MANTLE - SHAKER PROFILE

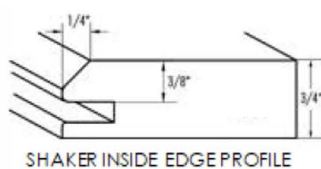
## Paneled Mantles

Available on all hood types.

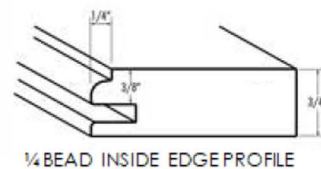
Paneled options are Shaker and 1/4" Bead.

Rails and Stiles will be 2 7/8" with eased outside edge profile.

Standard option is one panel on front. Side paneled options will be available for additional charge.



SHAKER INSIDE EDGE PROFILE



1/4 BEAD INSIDE EDGE PROFILE



# BUILT-IN OPTION

---

---



BUILT-IN SLOPED



BUILT-IN SLOPED

## Built-In Option

Built-In box will be 12" deep and mantle will be 8 ½" deep plus trim.

All Built-In hoods will have a removable canopy attached with furniture clips.

\*Width of hood will be the actual Built-In box width. Trims will return to the face of the built-in box.

It is recommended that the blower insert width to be 6" less than width of hood for built-in options.

# FLOATING SHELVES

---



## Floating Shelves

---

*\*NO RETURN OR EXCHANGE* on all floating shelves and hoods!

All shelves are constructed with 1/2" cabinet-grade plywood and a premium finish.

Shelf less than 60" in width comes with TWO support brackets.

Custom sizes available upon request.

Each pair of brackets can hold up to 125 lbs.

# FLOATING SHELVES

## Floating Shelf Support Brackets



### Tools Needed

Measuring tape	Pencil	T10 torx drive bit
Laser level (optional)	Impact driver	#1 square drive bit
Level	T20 torx drive bit	Drill
Stud finder		

### Parts Included

[2] Shelf bracket arms	[4] 1-5/8" trim screws
[2] Base plates	[2] 1" self-tapping trim screws
[4] Cabinet screws	[1] 5/32" drill bit

## Installation Instructions

**Step 1:** Using a laser level or level as a guide, draw a horizontal line on the selected wall or area at the desired installation height taking into account the thickness of the shelf. The line must be as long as the shelf that's being installed.

**Step 2:** Use a stud finder to find wall studs to mount your brackets on within the length of the horizontal line. Use a pencil to draw a vertical line in the center of each stud up 1" from the horizontal line.

**Step 3:** Place the provided adhesive mounting template on the wall where the shelf bracket will be fastened. The top edge of the template should be on the horizontal line and the vertical center line should match the vertical line on the wall.

**Step 4:** With an impact and a T20 drive bit, drive a cabinet screw into the lower indicator on the mounting template, leaving approximately 1/8" between the head of the screw and the wall.

**Step 5:** Fit the base plate on the lower screw and drive the top screw through the upper hole in the base plate.

**Step 6:** Lock the shelf bracket arm into the base plate.

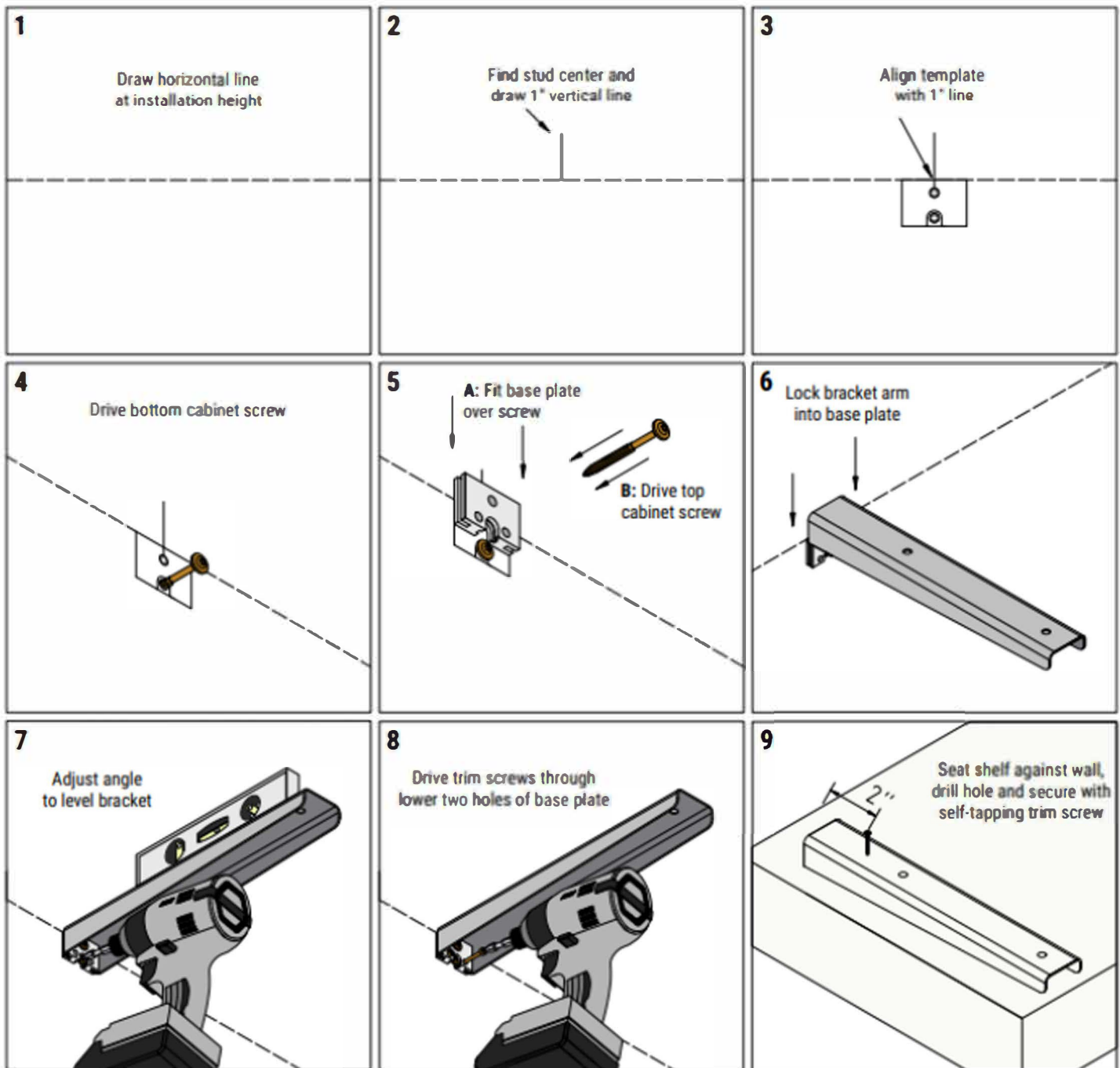
**Step 7:** To level the bracket, place a level on top of the bracket arm and, using an impact with a T20 bit, rotate the bottom screw clockwise or counter-clockwise. Pitch the bracket arm up slightly to compensate for the weight of the shelf. Make sure to level the brackets with each other.

**Step 8:** With an impact and T10 drive bit, drive the 1-5/8" trim screws into the lower two holes in the base plate.

**Repeat steps 3-8 for each shelf bracket.**

**Step 9:** Slide the shelf onto the shelf brackets and push it firmly against the wall. Measure 2" out from the lines drawn in step 2 and use a drill with the 5/32" bit to drill to, but not through, the brackets. Use an impact with a #1 square drive bit to drive a 1" self-tapping screw through each hole and into the brackets to secure the shelf to the wall.

# FLOATING SHELVES



*Weight limit: 125 lbs per pair - Wood Stud Installation*